

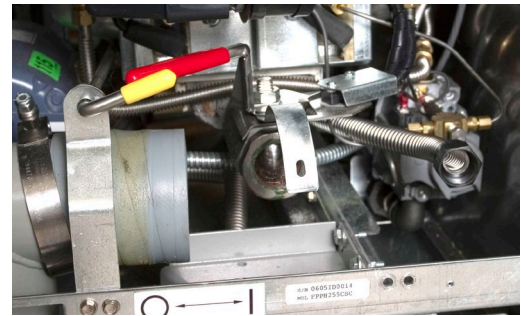
# H55 Wand Kits, 826-2537, 826-2542

Kits 826-2537 and 826-2542 are for the installation of a front-discharge oil hose, which can be used to clean frypots during filtering or to dispose of oil. Follow these instructions to place the front discharge kit on an H55 fryer. **This kit will only fit on units with a full vat on the right.**

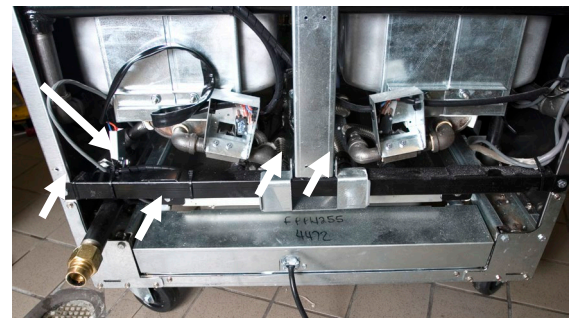
In These Kits		
Part No.	Description	Qty
1068552	Mount, coupling wand	1
1068553	Ball valve, linkage	1
1085421	Oil disposal wand Assy	1
8236686	Tube, 3"*	1
8236726	Tube, 13"***	1
8130165	Street El ½"	2
8090361	Screw, drill #8	6
8196342	Instructions	1

\* in 826-2537; \*\* in 826-2542

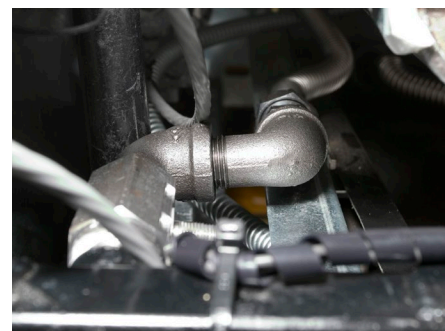
1. Remove power from unit.
2. Ensure the drain valves are tightly closed and remove right side of the front drain manifold. See **figure 1**.
3. Move to the back of the fryer and remove the lower back.
4. Remove the left most plug from the port on the square oil-return manifold (rear view). See **figure 2**.
5. Remove the lever and switch assembly from the valve provided in the kit.
6. Install the close nipple and the valve in the opened port on the drain manifold. The assembled plumbing should point into the fryer cabinet. See **figure 3**.
7. Remove the bolts from the oil return manifold except for the two right bolts, which should be loosened.
8. Pry slightly on the left side of the manifold, pulling it away from the cabinet enough to allow the placement of the remaining elbow. See **figure 4**.
9. Install the second elbow, tube adapter and stainless steel flex line, which should reach to the front of the cabinet. See figure 3.
10. Install the bracket for disposal hose quick disconnect on the fryer's front channel.
11. Install the quick-disconnect hardware and connect the flex line.
12. Install the provided drain manifold section, which creates additional space for the front discharge assembly and switch. See **figure 6**.
13. Install the micro-switch assembly on the new valve. See **figure 5**.
14. Wire the new switch in parallel with the existing oil return switch.
15. Assemble the oil disposal rod. Preassembly is necessary due to space constraints in the cabinet. See **figure 7**.
16. Install the lever, attaching it to the valve with the lock tab and nut.
17. Install the front bracket for the oil-disposal rod. See **figure 6**.
18. Pull the filter pan away from the fryer.



**Figure 1:** The original drain manifold extension has been removed. The flexible oil-return line is visible on the right.



**Figure 2:** The square oil-return manifold is visible. The port on the left side (marked by down arrow) is removed and the bolts (marked by arrows) supporting the manifold are removed or loosened. The right side manifold bolts are loosened.



**Figure 3:** The valve and elbows in the kit are shown mounted on the oil-return manifold. Placement of the inward pointing elbow will probably require minor prying of the manifold assembly as shown in figure 4.

# H55 Wand Kits, 826-2537, 826-2542

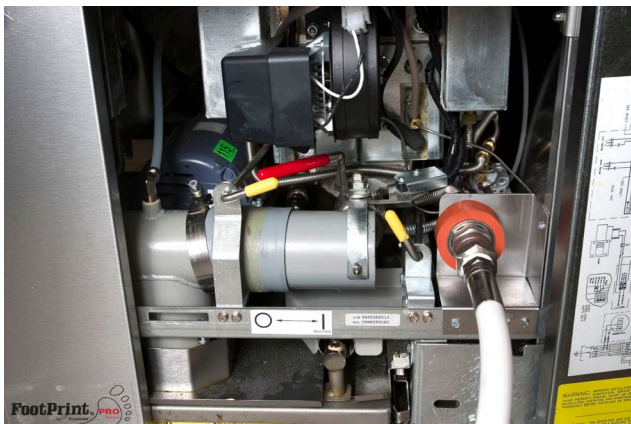
19. Attach the wand assembly to the quick disconnect.
20. Return power to the unit and activate the disposal rod with the new oil-disposal rod. The pump should activate and pump air through the hose.
21. Remove power and replace the back of the fryer.



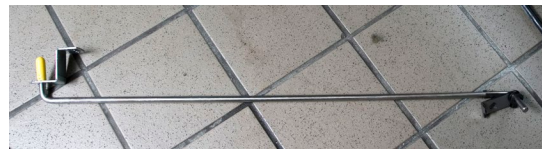
**Figure 4** Pry on the loosened manifold as necessary to install the inward pointing elbow.



**Figure 5** The rear valve switch is shown in place. It is wired in parallel with the existing switch, using piggyback terminals.



**Figure 6:** The kit is shown in place with the hose attached. The new shorter drain manifold is visible to the left of the hose. **The kit only fits fryers with a full vat on the right, which allows sufficient space for the QD.**



**Figure 7** The oil-return activation rod is shown with its hardware attached.